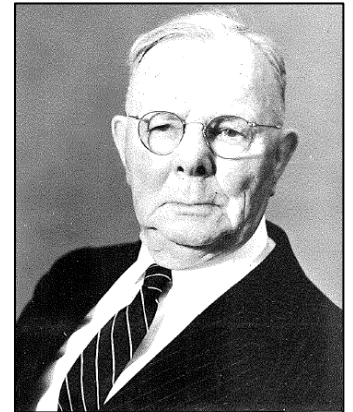

OUR HISTORY AT ST. STEPHEN'S

By Nelvin Yeakel, St. Stephen's Archivist

The Rischel and Scholl Families

In early 1890, the Scholl and Rischel families settled in Hottlesville, a small farming village that no longer exists. At the time, Hottlesville stretched from the Monocacy Creek in the west, to Linden Street in the east, to Elizabeth Avenue in the south, and to what is now the Bethlehem city line in the north. By an act of the state legislature in 1905, Hottlesville became "North Bethlehem."

Both families became involved in St. Stephen's Church when it was founded in 1897. Among the first eight confirmation class members were children Charles M. Scholl and Ida Rischel. They were confirmed on March 4, 1899. It is also noted that Ida Rischel became our first church organist when the first organ was purchased for \$65 on April 24, 1899. Charles and Ida's



friendship blossomed and, on October 25, 1902, they are the first couple married at St. Stephen's by circuit pastor Rev. Edwin Ebert.

Charles and Ida became active lifelong members of St. Stephen's. Charles served on various committees, while Ida became involved with The Ladies' Aid Society. They were the parents of three daughters – Isabell, Reba, and Grace. Charles passed away in 1953. Ida passed away in 1984 at the

age of 104.

Today, there are currently six active church members who are descendants of Charles and Ida Scholl.

